

XQ Series Quick Exhaust Valve

Specifications:

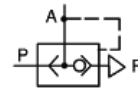
Medium: Compressed air filtered at 40um

Working pressure MPa: 0.2~0.8

Ambient Temp °C: -5~60



Symbol



How to Order

XQ	-----	15
Quick Exhaust Valve		06: G1/8"
		08: G1/4"
		10: G3/8"
		15: G1/2"

Dimensions(mm):

Part Code	A	B	C	D	Eφ	F
XQ-06	27	30	42	50	32	G1/8
XQ-08	27	30	42	50	32	G1/4
XQ-10	36	41	51	62	45	G3/8
XQ-15	44	48	64	76	55	G1/2

