

AQ Series Quick Exhaust Valves



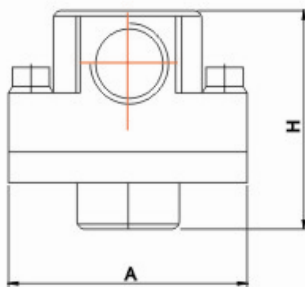
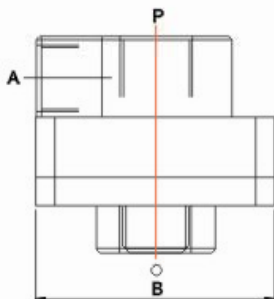
AQ 5000



AQ 3000



AQ 2000



Dimensions(mm):

Model	Bore	A	B	H
AQ2000-01,02	1/8 1/4	45	45	40
AQ3000-02,03	1/4 3/8	56	56	50
AQ5000-04,06	1/2 3/4	85	85	75

Technical data

Fluid		Air
Proof Pressure		15.3kgf/cm ² {1.5MPa}
Max. working pressure	AQ2000-5000	10.2kgf/cm ² {1.0MPa}
Min. working pressure	AQ2000-5000	0.51kgf/cm ² {0.05MPa}
Ambient and fluid temperature		5-60°C

Model	Bore	Effective area(mm ²)		Weight
		IN→OUT	OUT←EXH	
AQ2000-01	1/8	25	25	110
AQ2000-02	1/4	35	40	105
AQ3000-02	1/4	40	42	215
AQ3000-03	3/8	60	70	205
AQ5000-04	1/2	105	115	690
AQ5000-06	3/4	135	180	650

