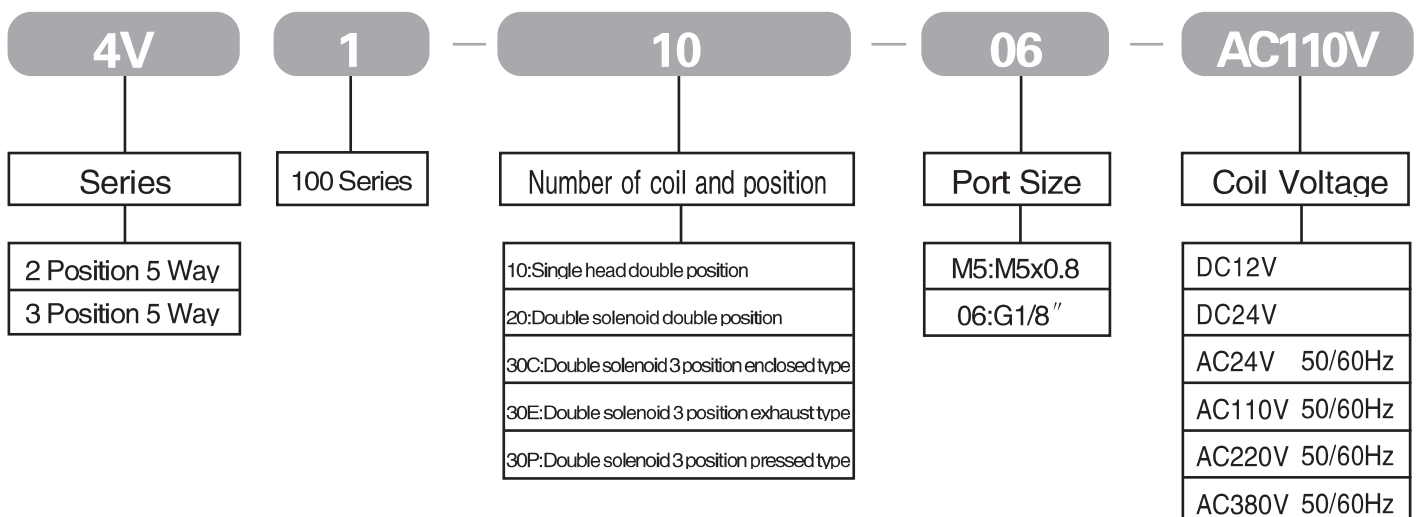




Specifications:

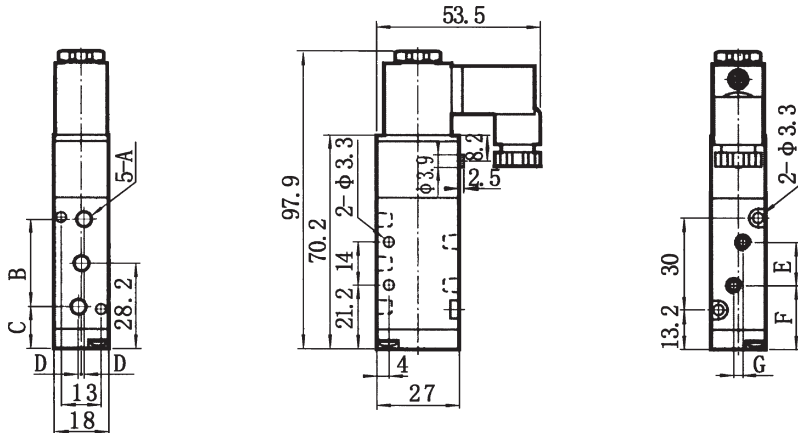
Type	4V110-M5	4V110-06	4V120-M5	4V120-06	4V130C-M5	4V130C-06	4V130E-M5	4V130E-06	4V130P-M5	4V130P-06
Acting type	Internally pilot-actuated									
Position number	2 Position 5 Way				3 Position 5 Way					
Port size(G)	M5	1/8"	M5	1/8"	M5	1/8"	M5	1/8"	M5	1/8"
Applicable cylinders	φ 12~ φ 40mm									
Fluid	Air									
Lubrication	Lubricated or not									
Operating Pressure(Mpa)	0.15~0.8									
Temperature range	5~60°C									
Voltage change	± 10%									
Power consumption	AC:7.5VA DC:3W									

How to order:



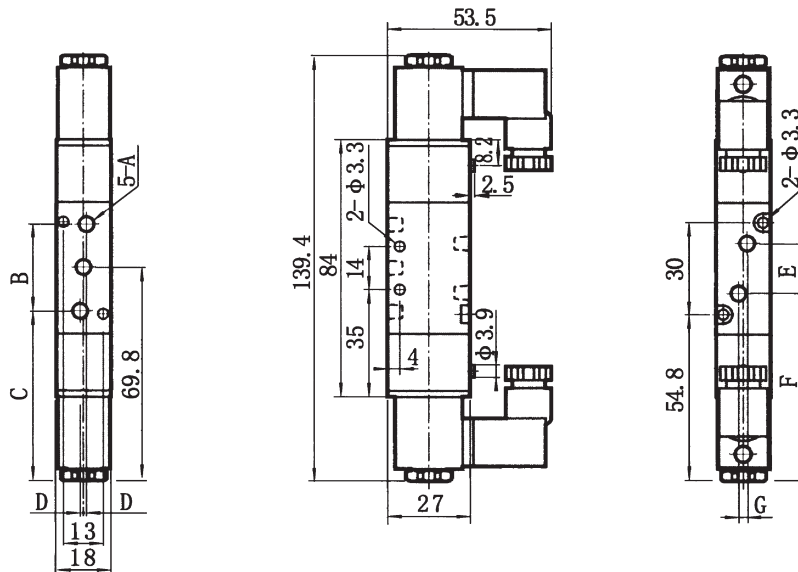
Dimensions(mm):

4V110



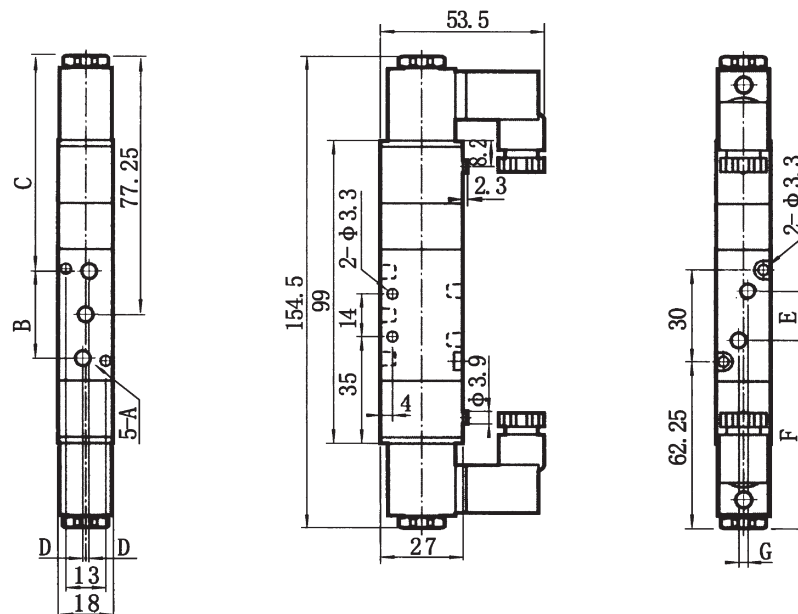
Type	4V110-M5	4V110-06
A	M5 × 0.8	G1/8
B	27	28
C	14.7	14.2
D	0	1
E	14	16
F	21.2	20.2
G	0	3

4V120

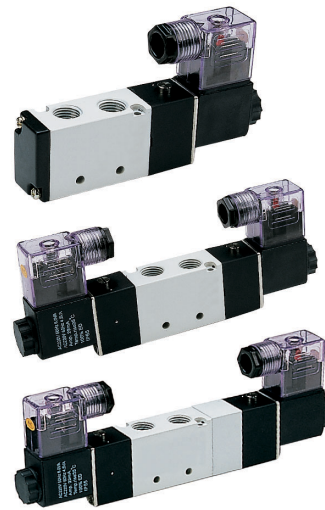


Type	4V120-M5	4V120-06
A	M5 × 0.8	G1/8
B	27	28
C	56.2	55.7
D	0	1
E	14	16
F	62.7	61.7
G	0	3

4V130



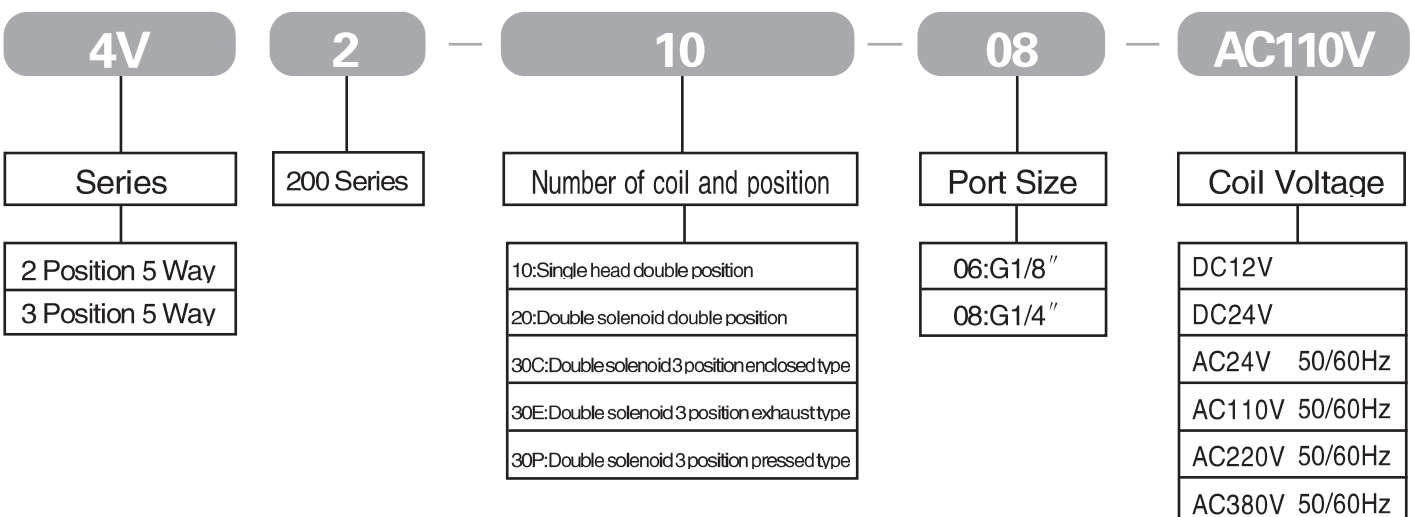
Type	4V130-M5	4V130-06
A	M5 × 0.8	G1/8
B	27	28
C	63.75	63.25
D	0	1
E	14	16
F	70.25	69.25
G	0	3



Specifications:

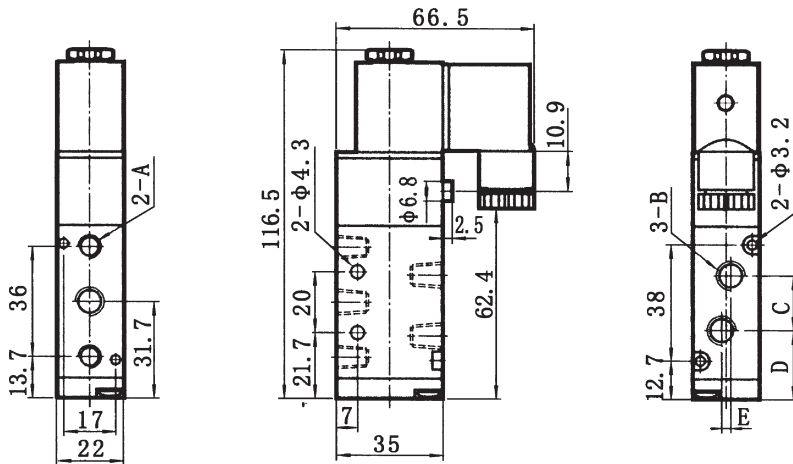
Type	4V210-06	4V210-08	4V220-06	4V220-08	4V230C-06	4V230C-08	4V230E-06	4V230E-08	4V230P-06	4V230P-08
Acting type	Internally pilot-actuated									
Position number	2 Position 5 Way				3 Position 5 Way					
Port size(G)	1/8"	1/4"	1/8"	1/4"	1/8"	1/4"	1/8"	1/4"	1/8"	1/4"
Applicable cylinders	ϕ 40~ ϕ 63mm									
Fluid	Air									
Lubrication	Lubricated or not									
Operating Pressure(Mpa)	0.15~0.8									
Temperature range	5~60°C									
Voltage change	\pm 10%									
Power consumption	AC:7.5VA DC:3W									

How to order:



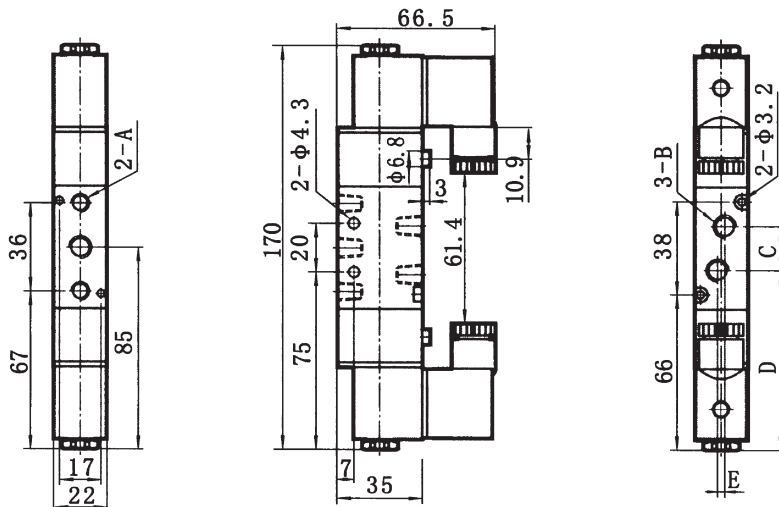
Dimensions(mm):

4V210



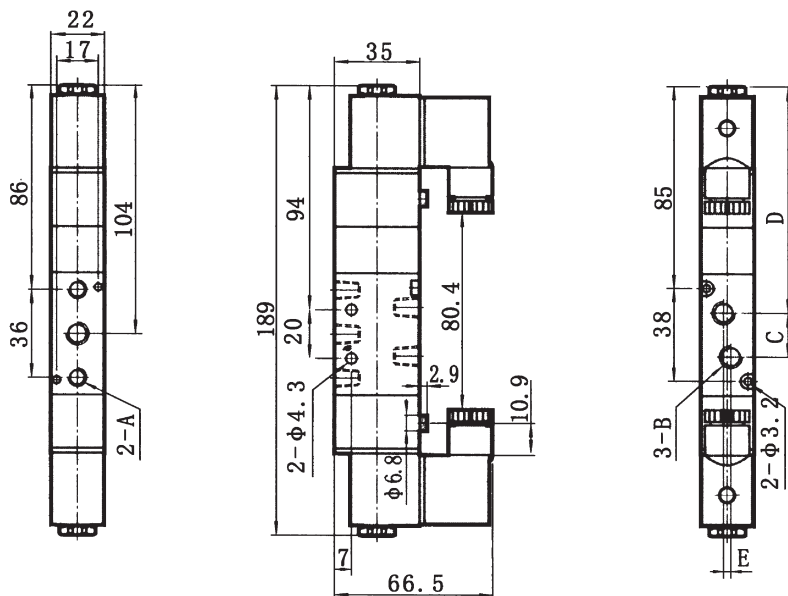
Type	4V210-06	4V210-08
A	G1/8	G1/8
B	G1/8	G1/4
C	18	21
D	22.7	21.2
E	0	3

4V220

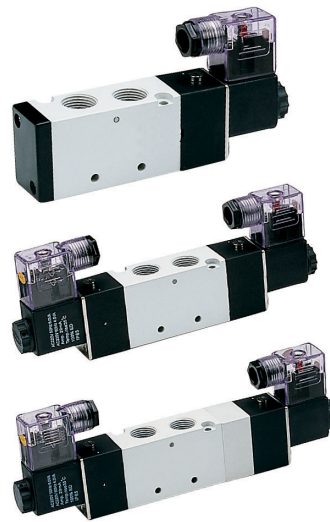


Type	4V220-06	4V220-08
A	G1/8	G1/8
B	G1/8	G1/4
C	18	21
D	76	74.5
E	0	3

4V230



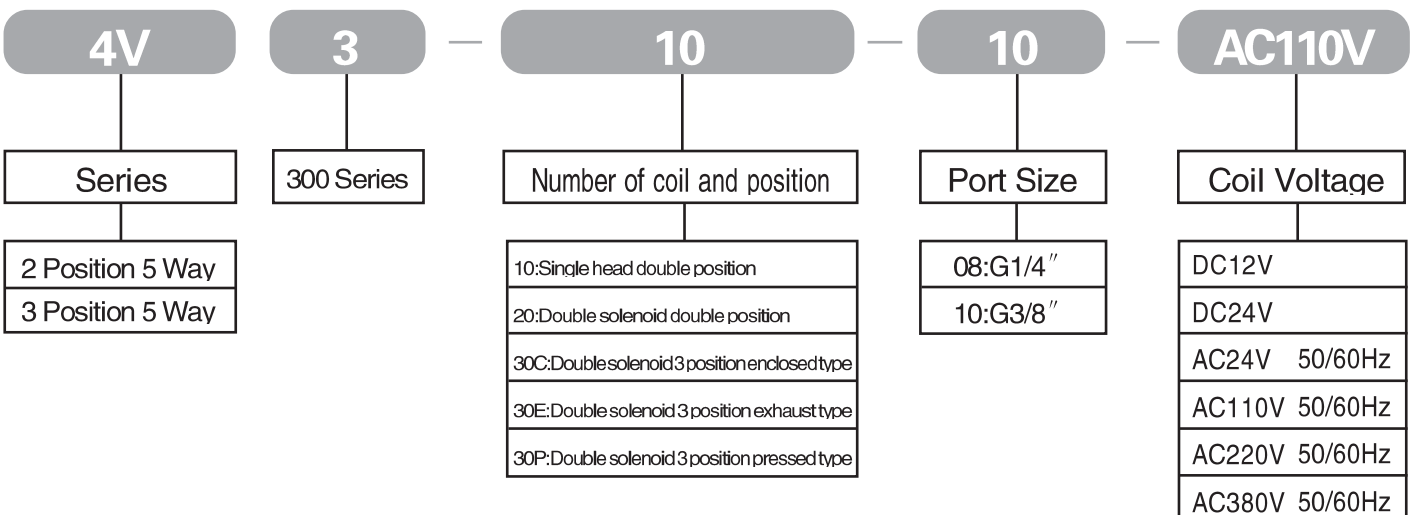
Type	4V230-06	4V230-08
A	G1/8	G1/8
B	G1/8	G1/4
C	18	21
D	95	93.5
E	0	3



Specifications:

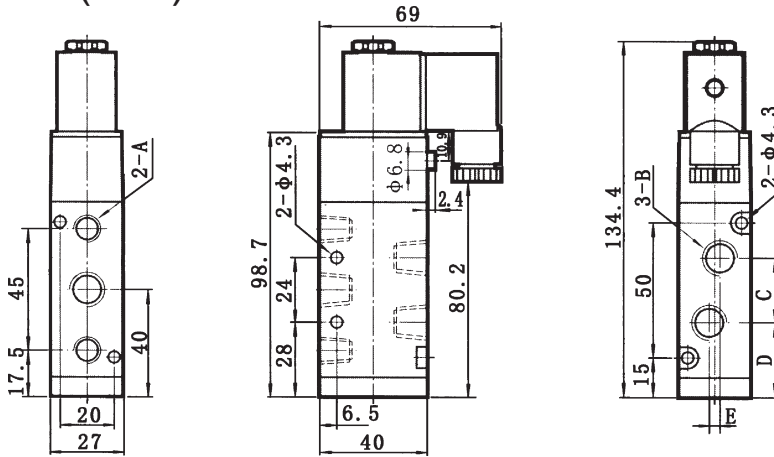
Type	4V310-08	4V310-10	4V320-08	4V320-10	4V330C-08	4V330C-10	4V330E-08	4V330E-10	4V330P-08	4V330P-10
Acting type	Internally pilot-actuated									
Position number	2 Position 5 Way				3 Position 5 Way					
Port size(G)	1/4"	3/8"	1/4"	3/8"	1/4"	3/8"	1/4"	3/8"	1/4"	3/8"
Applicable cylinders	φ 63~ φ 100mm									
Fluid	Air									
Lubrication	Lubricated or not									
Operating Pressure(Mpa)	0.15~0.8									
Temperature range	5~60°C									
Voltage change	± 10%									
Power consumption	AC:7.5VA DC:3W									

How to order:



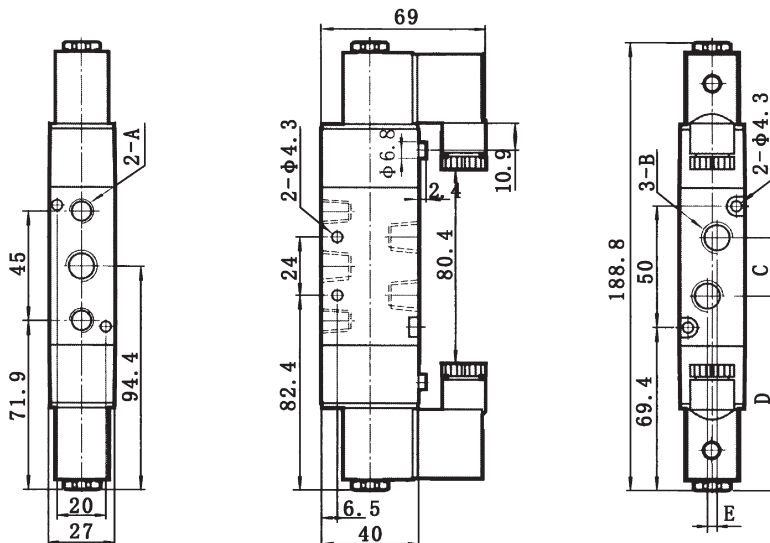
Dimensions(mm):

4V310



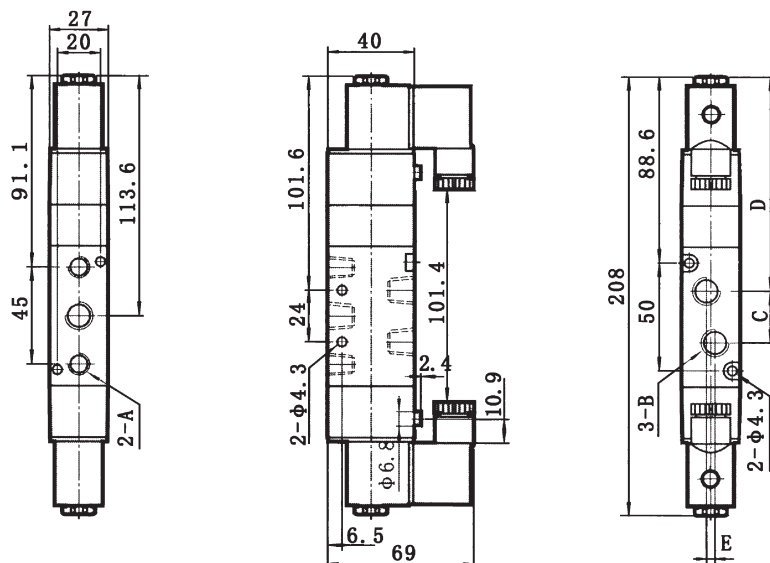
Type	4V310-08	4V310-10
A	G1/4	G1/4
B	G1/4	G3/8
C	22	24
D	29	28
E	0	4

4V320

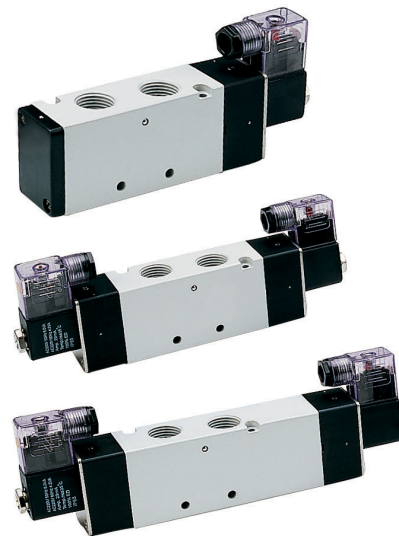


Type	4V320-08	4V320-10
A	G1/4	G1/4
B	G1/4	G3/8
C	22	24
D	83.4	82.4
E	0	4

4V330



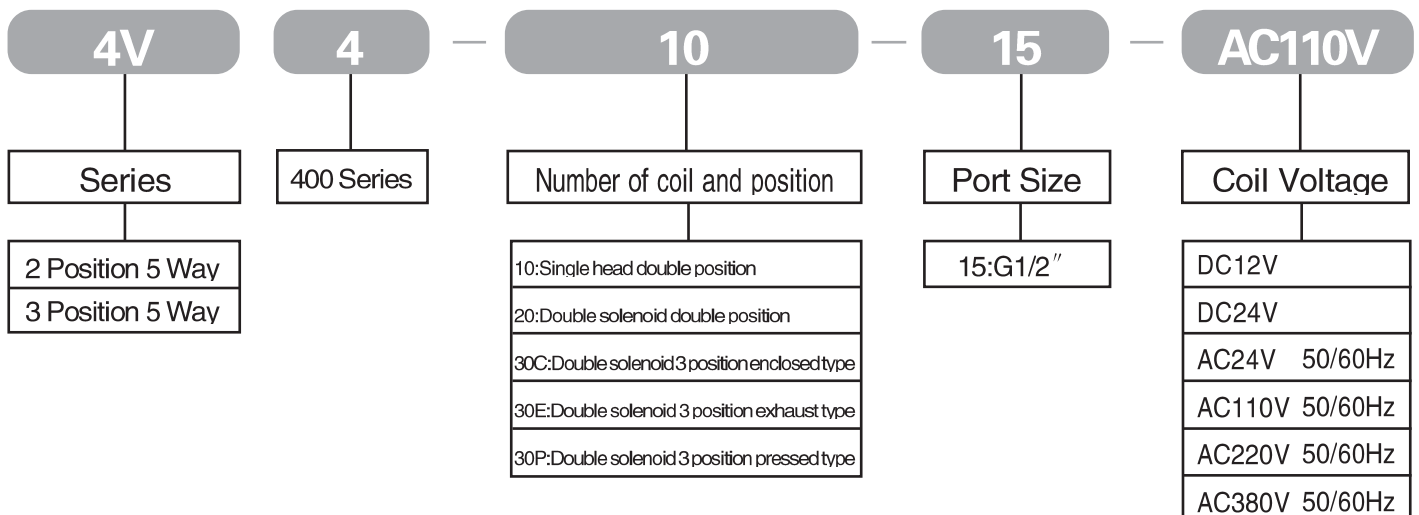
Type	4V330-08	4V330-10
A	G1/4	G1/4
B	G1/4	G3/8
C	22	24
D	102.6	101.6
E	0	4



Specifications:

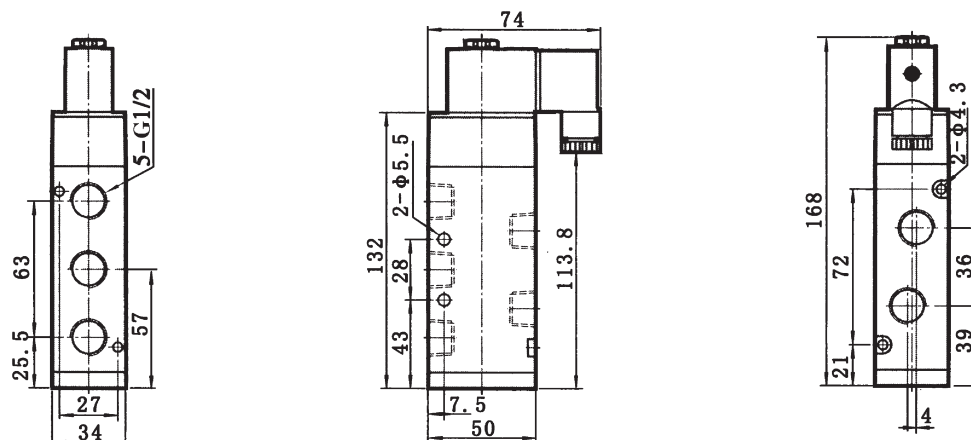
Type	4V410-15	4V420-15	4V430C-15	4V430E-15	4V430P-15
Acting type	Internally pilot-actuated				
Position number	2 Position 5 Way		3 Position 5 Way		
Port size(G)	1/2"				
Applicable cylinders	φ 80~ φ 160mm				
Fluid	Air				
Lubrication	Lubricated or not				
Operating pressure(Mpa)	0.15~0.8				
Temperature range	5~60°C				
Voltage rchange	± 10%				
Power consumption	AC:7.5VA DC:3W				

How to order:

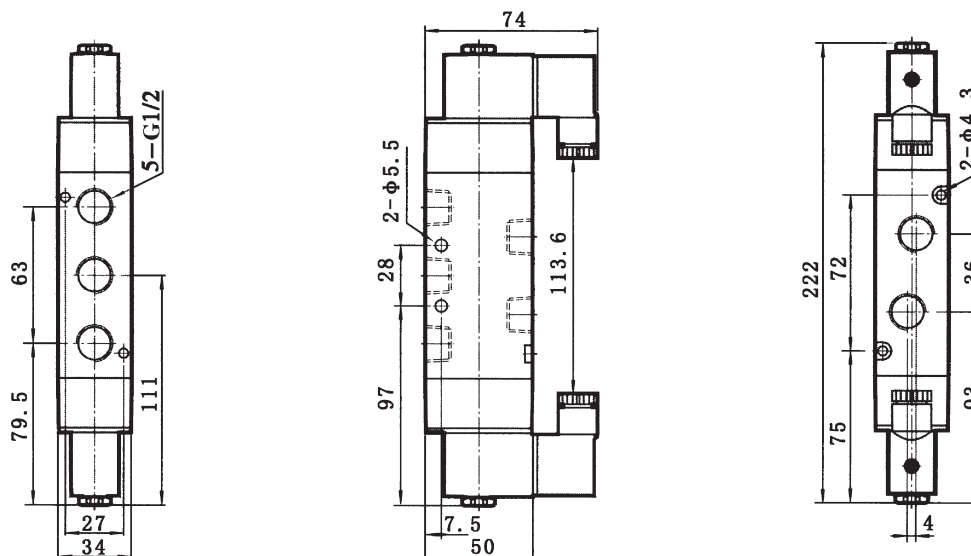


Dimensions(mm):

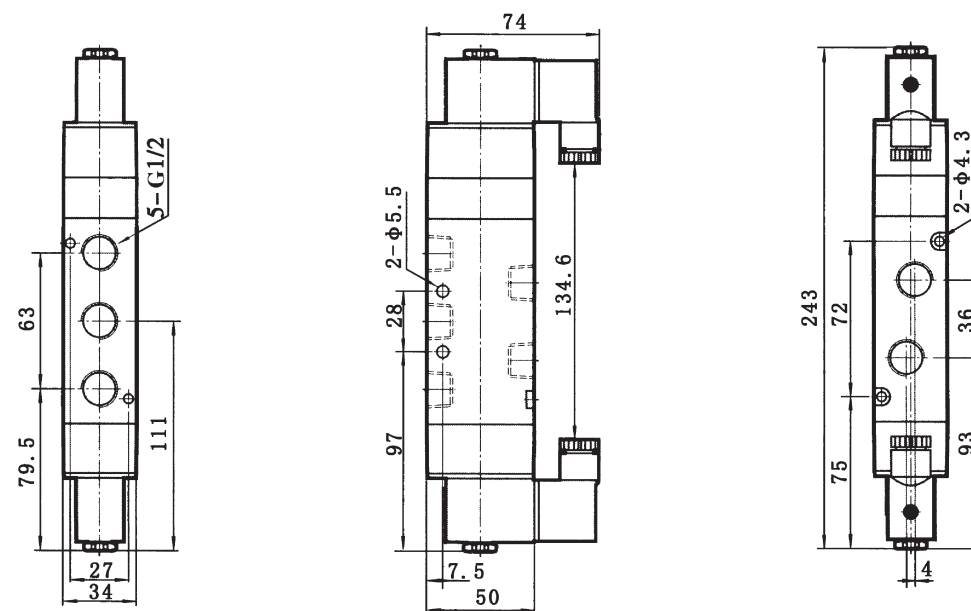
4V410



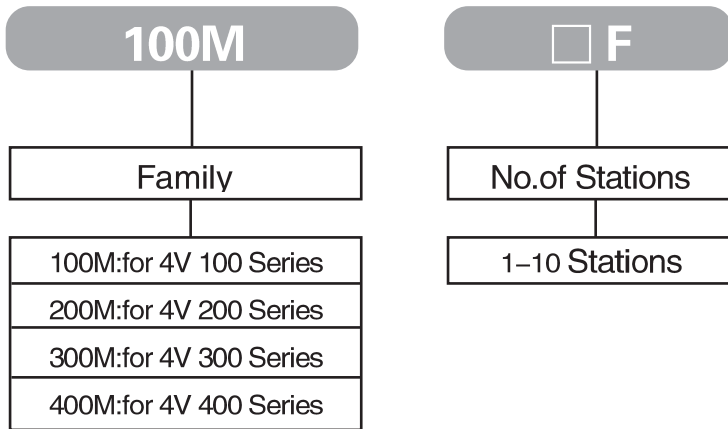
4V420



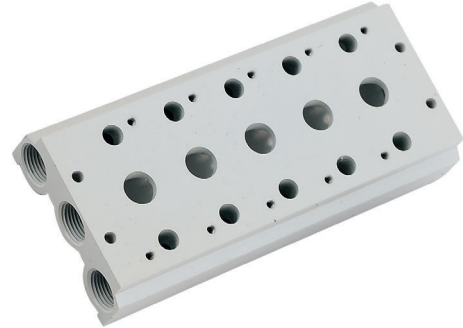
4V430



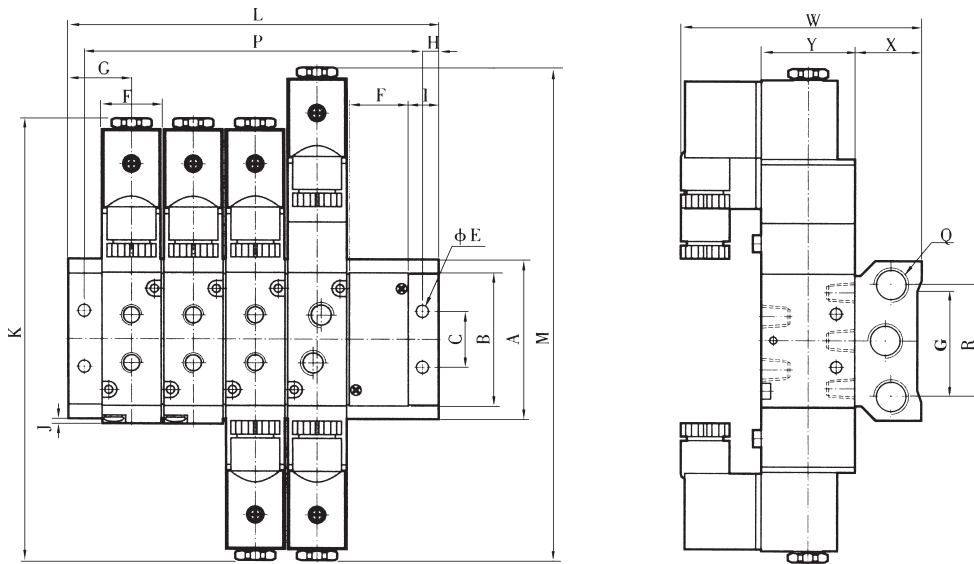
How to order:



Manifold



Dimensions(mm):



Type	A	B	C	E	F	G	H	I	J	K	L									
											1F	2F	3F	4F	5F	6F	7F	8F	9F	10F
100M□F	58	43.2	20	4.2	18.3	19	5	9.9	0.8	139.4	38	57	76	95	114	133	152	171	190	209
200M□F	61	50.7	21	4.3	22.4	23	6	11.8	1.2	170	46	69	92	115	138	161	184	207	230	253
300M□F	75	64.8	26	4.5	27.3	27	6	13.4	2.5	188.8	54	82	110	138	166	194	222	250	278	306
400M□F	104	94.5	32	5.5	34.3	31.5	7	18.4	5	221.8	71	98	133	168	203	238	273	308	343	378

Type	M	P										Q	R	S	W	X	Y
		1F	2F	3F	4F	5F	6F	7F	8F	9F	10F						
100M□F	154.5	28	47	66	85	104	123	142	161	180	199	G1/4	40	30	78.5	25	27
200M□F	189	34	57	80	103	126	149	172	195	218	241	G1/4	43	32	92.5	26	35
300M□F	208	42	70	98	126	154	182	210	238	266	294	G3/8	53	48	99	30	40
400M□F	243	57	84	119	154	189	224	259	294	329	364	G1/2	68	67	112	38	50